

Drypower Batteries

DEEP CYCLE POWER



**Cyclic power VRLA AGM batteries
for deep cycle motive power in cyclic
and motive power applications.**

Designed to provide reliable performance and longevity in cyclic and motive power applications such as mobility, recreational caravan & RV, marine, medical equipment, solar applications and more.



EXPERIENCE IN LEAD ACID BATTERIES
www.drypower.com.au



Deep Cycle Power Series

Suitable for:

- **Deep Cycle**
- **Electric Mobility**
- **Medical Equipment**
- **Industrial Controls**
- **Material Handling Equipment**

- Industry leading 99.99% pure lead content for superior service life and dependable performance.
- Special grid frame alloy design with outstanding anti-corrosion performance.
- Thicker plate design & higher percentage of tin content compared with the industry standard to maximise battery standby life by minimising sulphation.
- Suitable for use in any orientation (except inverted) for use in hard to reach or remote locations.
- Maintenance free and non-spillable design for long service life.
- 6V and 12V models available for consumer and industrial needs, from children's ride on toys to medical monitoring equipment and more.



DEEP CYCLE VRLA AGM TYPE

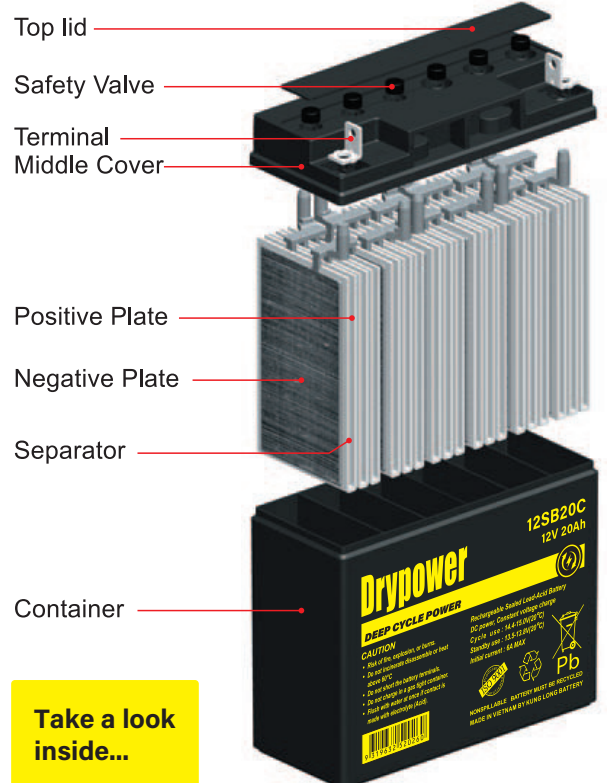
Suitable for deep cycle and motive power applications, the Deep Cycle Power AGM range from Drypower delivers reliable power in many applications.

Utilising a special grid frame alloy design to handle repeated major discharging and charging cycles, extending service life, providing outstanding anti-corrosion performance, and reducing sulphation.

Absorbed Glass Mat (AGM) construction absorbs the electrolyte to keep it suspended and evenly distributed across the grid plates, making the battery maintenance free and spill proof, eliminating the need to monitor water levels and balance charging - which can be tricky depending on where the batteries have been installed.

The ABS case provides ruggedised protection to endure shock, vibration and heat without affecting battery performance. The higher capacity models are available in a UL94 V-0 rated flame retardant case for extra protection as standard.

Drypower batteries are classed as non-spillable and safe for transportation by Road, Air (IATA/ICAO Special Provision A67), and Sea (per IMDG Special Provision 238).



Take a look inside...



Range Specifications

Model No.	Specifications		Dimensions				Weight (kg)	Terminal Type	Case Type	Design Life (Years)	Carton / Pallet Qty
	Volts (V)	Capacity 20hr (Ah)	L mm	W mm	H mm	HT (w/ Term) (mm)					
CYCLIC RANGE - DEEP CYCLE USE											
STANDARD CASE											
6SB5C	6	5	70	47	102	106	0.83	F1	UL94 HB	3-5	20 / 1200
12SB5C	12	5	90	70	101.5	107	1.90	F1	UL94 HB	3-5	10 / 600
12SB10C	12	10	151	65	112	118.5	3.29	F2	UL94 HB	3-5	5 / 400
12SB14C-F2	12	14	151	98	95	100	4.40	F2	UL94 HB	3-5	4 / 320
12SB15C	12	15	151	99	98	98	4.50	F6	UL94 HB	3-5	4 / 320
12SB20C	12	20	181	76	167	167	5.95	F3	UL94 HB	3-5	2 / 150
12SB22C	12	22	181	76	167	167	6.90	F8	UL94 HB	3-5	2 / 150
12SB24C	12	24	181	77.5	170	170	7.14	F6	UL94 HB	3-5	2 / 150
12SB26CL	12	26	166	175	125	125	9.30	F3	UL94 HB	3-5	2 / 120
12SB26CLN	12	26	166	175	125	125	9.30	F6	UL94 HB	3-5	2 / 120
12SB30C	12	30	166	125.5	176	176	9.30	F8	UL94 HB	3-5	2 / 128
12SB34C	12	34	197	131	159	170	10.50	F6	UL94 HB	3-5	2 / 96
12SB36C	12	36	197	131	159	170	10.70	F8	UL94 HB	3-5	1 / 96
12SB40CL	12	40	198	166	171	171	13.40	F8	UL94 HB	3-5	1 / 75
12SB50C	12	50	199	166	171	171	15.10	F8	UL94 HB	3-5	1 / 75
12SB55CL	12	55	226	135	207	214	17.00	F8	UL94 HB	3-5	1 / 48
12SB65CL	12	65	350	166	174	174	23.30	F8	UL94 HB	3-5	1 / 36
FLAME RETARDANT CASE											
12SB80CL-FR	12	80	260	170	202	207	24.20	F8	UL94 V-0	12	1 / 32
12SB110CLS-FR	12	110	307	168	208	214	30.00	F8	UL94 V-0	12	1 / 32
12SB120CL-FR	12	120	338	170	212	217	32.50	F8	UL94 V-0	12	1 / 32
12SB140CL-FR	12	140	352	170	273	278	43.00	F8	UL94 V-0	12	1 / 24
12SB160CL-FR	12	160	352	170	273	278	46.00	F8	UL94 V-0	12	1 / 24
12SB220CL-FR	12	220	522	238	219	224	66.50	F18	UL94 V-0	12	1 / 16

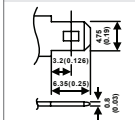
Capacity measured at 20 hour rate. Performance may vary depending on application. All specifications are correct at time of creation. All specifications and operation conditions contained herein are subject to change or improvement without prior notice to the user. This data is for evaluation purposes only. No guarantee is intended or implied by this data. For clarification and updated information, please contact us • Aug2020_Rev1



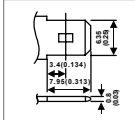
Available in UL94 V-0 flame retardant case for some models as indicated.

TERMINAL TYPE

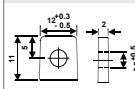
F1 (Faston Tab 187)



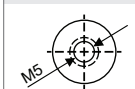
F2 (Faston Tab 250)



F3 (M5 Bolts)



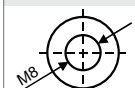
F6 (M5 Bolt)



F8 (M6 Bolt)



F18 (M8 Bolt)



FOR MORE INFORMATION

Please refer to our website www.drypower.com.au for more comprehensive information, datasheet downloads, terminal type guide, product catalogues, compatible battery charger options, etc.



Manufactured in VIETNAM or TAIWAN



Compare the Drypower Range

Application	Backup & Main Power Range	Cyclic Range	High Rate UPS Range	Standby Long Life Range	High Power Standby Long Life Range	Front Terminal Standby Long Life Range	Solar Power Range	Hybrid Gel Range	Pure Gel Range	Recharge-able Lithium Range
General Electronics	☼	☼					☼	GEL		LiFe
Toys	☼	☼						GEL		LiFe
UPS & Data	☼		☼	☼	☼	☼			☼	
Security	☼		☼	☼	☼	☼				
Fire Alarm	☼		☼	☼	☼	☼				
Emergency Lighting	☼			☼	☼	☼				
Medical	☼	☼		☼	☼	☼		GEL	☼	LiFe
Mobility / Wheelchair / AGV		☼						GEL	☼	LiFe
Golf Cart / Buggy		☼						GEL	☼	LiFe
Wind Power		☼					☼	GEL	☼	LiFe
4x4/RV/Marine Storage		☼					☼	GEL	☼	LiFe
Deep Cycle Applications		☼					☼	GEL	☼	LiFe
Telecommunications / Data			☼	☼	☼	☼		GEL	☼	LiFe
Off Grid Solar		☼					☼	GEL	☼	LiFe
Infrastructure	☼	☼		☼	☼	☼	☼	GEL	☼	LiFe
Utilities	☼	☼		☼	☼	☼	☼	GEL	☼	LiFe

This chart is to be used as a guide only. Specific application requirements may need to be considered. If unsure, please contact us.