

Drypower Gel

DEEP CYCLE POWER

GEL



Drypower Gel Deep Cycle Power batteries are a proven performer when regular and consistent deep cycling is required.

Featuring both Pure Gel & Hybrid Gel versions, this range offers greater depth of discharge with exceptional deep discharge recovery. Ideal for consistent power delivery in motive power applications, compared with AGM batteries.



EXPERIENCE IN LEAD ACID BATTERIES
www.drypower.com.au

Drypower GEL: Deep Cycle Power

Suitable for:

- Deep Cycle
- RV, Caravan
- Mobility Scooter
- Motorised Buggy
- Off-Grid Solar
- Material Handling Equipment

- Industry leading 99.99% pure lead content for superior service life and dependable performance.
- Low internal resistance for optimum charge and discharge efficiency provides high rate performance compared to AGM batteries in deep discharge applications.
- Gel compound contains more electrolyte that is more evenly distributed across the battery for better contact between active materials, producing stable output throughout its service life, minimising sulphation and significantly improving standby life.
- Better suited for more extreme operating conditions:- gel composition prevents electrolyte evaporating in higher ambient operating temperatures and the electrolyte won't freeze in colder climates.
- Maintenance free and non-spillable design for long service life.

Pure Gel Type Series



HIGHEST CYCLE LIFE

For longer lasting performance, the Drypower Pure Gel range offers the highest cycle life in the range.

In slow deep discharge applications, the unique fumed silica gel paste and specially designed grid alloy plates provide reliable power delivery for longer than the equivalent AGM alternatives to reduce service costs associated with battery replacement.

Whether you require the large 215Ah, easy-to-install 160Ah front terminal, or the 2V cells for larger battery banks, consider your total cost of ownership and check out the Pure Gel power range for your application.

Hybrid Gel Type Series



DEEP CYCLE PERFORMANCE

Featuring a unique colloidal silica gel paste, with the specially designed grid alloy plate design, the Drypower Hybrid Gel battery range offers exceptional performance in deep cycle and motive power applications such as mobility scooters, golf carts, RV & camping power set-ups and off-grid solar systems.

With a variety of 12 Volt models from 7Ah to 160Ah and featuring a slim-line front terminal model for easy installation, the Hybrid Gel Deep Cycle range will have the right solution suitable for you.

Drypower batteries are classed as non-spillable and safe for transportation by Road, Air (IATA/ICAO Special Provision A67), and Sea (per IMDG Special Provision 238).



Range Specifications

Model No.	Specifications		Dimensions				Weight (kg)	Terminal Type	Case Type	Design Life (Years)	Carton / Pallet Qty
	Volts (V)	Capacity 20hr (Ah)	L mm	W mm	H mm	HT (w/ Term) (mm)					
PURE GEL TYPE RANGE											
STANDARD CASE											
2PLG520TS	2	520	241	172	336	340	31.00	F18	UL94 HB	12	1 / 24
2PLG630TS	2	630	241	172	336	340	36.00	F18	UL94 HB	12	1 / 24
12PLG215TS	12	212	522	238	219	224	64.00	F18	UL94 HB	12	1 / 12
FLAME RETARDANT CASE											
12PLG155FTTS-FR	12	151	550	110	288	288	49.00	F18	UL94 V-0	12	1 / 24
HYBRID GEL TYPE RANGE											
STANDARD CASE											
12GB7C	12	7	151	65	94	102	2.45	F1	UL94 HB	7-10	5 / 320
12GB12C	12	12	151	98	93	98	4.03	F2	UL94 HB	7-10	4 / 240
12GB20C	12	20	181	76	167	167	6.70	F8	UL94 HB	7-10	2 / 150
12GB24C	12	24	166	175	125	125	9.30	F3	UL94 HB	7-10	2 / 96
12GB36C	12	36	197	131	159	170	10.70	F8	UL94 HB	7-10	1 / 96
12GB50C	12	50	199	166	171	171	14.80	F8	UL94 HB	7-10	1 / 75
12GB55C	12	55	226	135	207	214	17.00	F8	UL94 HB	7-10	1 / 48
12GB65C	12	65^	350	166	174	174	23.90	F4	UL94 HB	7-10	1 / 40
12GB75C	12	75^	260	170	202	207	24.80	F8	UL94 HB	7-10	1 / 32
12GB100C	12	100^	338	170	212	217	34.00	F8	UL94 HB	12	1 / 24
FLAME RETARDANT CASE											
12GB160C-FR	12	160	550	110	288	288	50.00	F18	UL94 V-0	12	1 / 16
^Capacity measured at 10 hour rate.											

^ACapacity measured at 10 hour rate.

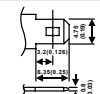
Capacity measured at 20 hour rate. Performance may vary depending on application. All specifications are correct at time of creation. All specifications and operation conditions contained herein are subject to change or improvement without prior notice to the user. This data is for evaluation purposes only. No guarantee is intended or implied by this data. For clarification and updated information, please contact us • Aug2020_Rev1



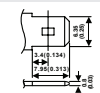
Available in UL94 V-0 flame retardant case for some models as indicated.

TERMINAL TYPE

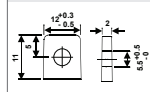
F1 (Faston Tab 187)



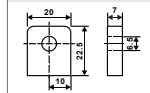
F2 (Faston Tab 250)



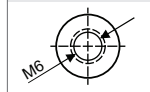
F3 (M5 Bolts)



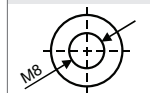
F4 (M6 Bolt)



F8 (M6 Bolt)



F18 (M8 Bolt)



FOR MORE INFORMATION

Please refer to our website www.drypower.com.au for more comprehensive information, datasheet downloads, terminal type guide, product catalogues, compatible battery charger options, etc.



Manufactured in VIETNAM or TAIWAN



Compare the Drypower Range

Application	Backup & Main Power Range	Cyclic Range	High Rate UPS Range	Standby Long Life Range	High Power Standby Long Life Range	Front Terminal Standby Long Life Range	Solar Power Range	Hybrid Gel Range	Pure Gel Range	Recharge-able Lithium Range
General Electronics	☼	☼					☼	GEL		LiFe
Toys	☼	☼						GEL		LiFe
UPS & Data	☼		☼	☼	☼	☼			☼	
Security	☼		☼	☼	☼	☼				
Fire Alarm	☼		☼	☼	☼	☼				
Emergency Lighting	☼			☼	☼	☼				
Medical	☼	☼		☼	☼	☼		GEL	☼	LiFe
Mobility / Wheelchair / AGV		☼						GEL	☼	LiFe
Golf Cart / Buggy		☼						GEL	☼	LiFe
Wind Power		☼					☼	GEL	☼	LiFe
4x4/RV/Marine Storage		☼					☼	GEL	☼	LiFe
Deep Cycle Applications		☼					☼	GEL	☼	LiFe
Telecommunications / Data			☼	☼	☼	☼		GEL	☼	LiFe
Off Grid Solar		☼					☼	GEL	☼	LiFe
Infrastructure	☼	☼		☼	☼	☼	☼	GEL	☼	LiFe
Utilities	☼	☼		☼	☼	☼	☼	GEL	☼	LiFe

This chart is to be used as a guide only. Specific application requirements may need to be considered. If unsure, please contact us.